



WET EXTRACTORS - PROFESSIONAL

GP 1/27 EXT

POWER MAX

1200 W

WATER LIFT

2470 mmH₂O

AIRFLOW

210 m³/h

TANK CAPACITY

27 l

PUMP POWER

48 W



EXCLUSIVE FEATURES

- ▶ SANIFILTER
- ▶ AP TUBE
- ▶ INNOVATIVE GASKET
- ▶ STRONG HOOKS
- ▶ SCREWING CONNECTION
- ▶ SEALANT FLOATER & INTEGRATED ANTIFOAM SYSTEM
- ▶ RELIABLE CONSTRUCTION FOR INTENSIVE USE
- ▶ DOUBLE STAGE MOTOR

MOST FREQUENTLY USE



INNOVATIONS



BLACK IS GREEN™

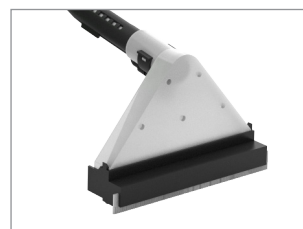


NEW BLEND FLEXIBLE HOSE

SPECS



INTERNAL DETERGENT TANK



NOZZLE FOR FLOOR AND CARPET



CABLE HOOK

TECHNICAL DATA

		GP 1/27 EXT
Code		ASD015060
PERFORMANCE		
Usage		WET&DRY
Motor		1x 2-stage
Power	W	1000 - 1200 max
Voltage	V	220-240
Water lift	mmH ₂ O	2470
Airflow	m ³ /h	210
Tank Capacity/Material	l	27/plastic
Detergent tank capacity/type	l	6/internal
Cable length	m	8,5
Sound Pressure Level (EN 60704-1; EN 60704-2-1; IEC 60335-2-68)	dB(A)	72
Diameter of accessories	mm	36
Pump power	W	48
Pump capacity	l/min	0,8
Pump pressure	bar	2
Dimensions (LxWxH)	mm	380x380x500
Weight	Kg	11,0

STANDARD EQUIPMENT

CODE: TBFX01183
FLEXIBLE HOSE 2 m
Ø36 mm



CODE: MPVR85445 (FOR 1 PC)
CLIPS TO FIX HYDROLITIC HOSE
(MACHINE COMES WITH 4PCS)



CODE: SPPV85446
NOZZLE FOR FLOOR AND CARPET
Ø36 mm



CODE: SPPV40311
EXTRACTOR UPHOLSTERY TOOL
Ø36 mm



CODE: KTRI04111
FILTERING KIT



OPTIONAL ACCESSORIES

CODE: SPPV28430
DOUBLE USE BRUSH
Ø36 mm



CODE: SPPV28242
FLAT LANCE Ø36 mm



CODE: SPPV28243
ROUND BRUSH Ø36 mm



CODE: MPVR00141
SMALL TOOL Ø36 mm

